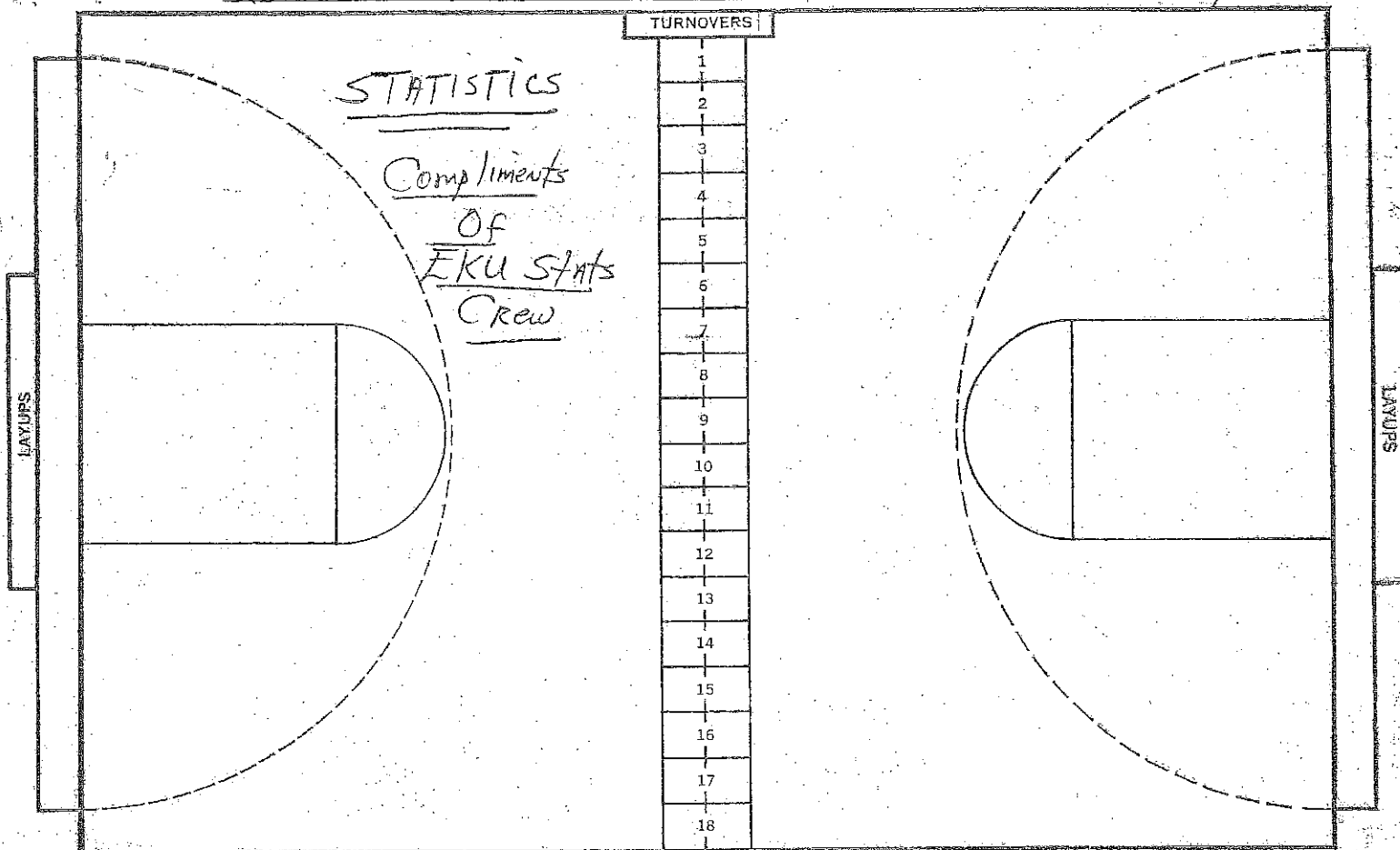


CAGE CHART *Louisville Butler*

AT *Seneca*

DATE *March 29, 1921* HALF *Final*



NO.	<i>Butler</i>	FG-FGA	FT-FTA	RB	P	TP	A
14	FRIERSON	1-7	3-7	7	4	5	0
10	Vittitoe	2-7	2-4	4	4	6	1
11	Owens	6-14	3-5	15	4	15	0
13	DANNER	4-16	1-5	10	4	9	1
32	Bowden	1-4	0-0	3	5	2	0
12	Meredith	2-5	6-11	8	3	10	0
5	Hancock	1-2	2-3	1	0	4	0
21	Miller	0-1	0-0	0	0	0	0
		-	-				
		-	-				
		-	-				
		-	-				
		-	-				
		-	-				
		-	-				
		-	-				
TOTALS		17-56	17-35	48	24	51	2

PERCENTS *30.4* *48.6* *8* TEAM REBOUNDS (NOT IN TOTAL)

NO.	<i>Seneca</i>	FG-FGA	FT-FTA	RB	P	TP	A
11	Abe	3-11	1-6	13	4	7	1
25	Coud	4-7	4-7	3	3	12	0
42	Vic	4-9	2-3	7	5	10	0
12	Car	7-16	3-7	8	4	17	1
41	Yob	1-3	0-0	3	5	2	0
53	Mc	0-3	2-2	2	3	2	0
22	Sm	0-0	0-0	1	3	0	0
		-	-				
		-	-				
		-	-				
		-	-				
		-	-				
		-	-				
		-	-				
		-	-				
		-	-				
		-	-				
		-	-				
		-	-				
TOTALS		19-49	12-25	38	27	50	2

PERCENTS *38.8* *48.0* *6* TEAM REBOUNDS (NOT IN TOTAL)

SCORE BY *Butler*
 10-13-7-20 = 51

SCORE BY *Seneca*
 12-13-12-13 = 50

ATTENDANCE *1,800 (Estimated)*